



ACCESS STATEMENT

This document does not contain personal opinions as to our suitability for those with disabilities but aims to accurately describe the facilities and services that we offer our visitors.

August 2024

Telephone: 01590 612345

Email: visit@beaulieu.co.uk

Website: www.Beaulieu.co.uk

National Motor Museum | Beaulieu Abbey & Exhibition | Palace House | Grounds & Gardens

Introduction

The Beaulieu visitor attraction takes its adherence to the Equality Act seriously, and as such is committed to providing the best possible accessibility for every visitor.

Most of the Beaulieu attraction is accessible to all visitors. However, owing to the nature of some of the attractions, listed buildings in particular, there are strict limitations on the scope of possible alterations.

This document details the steps we have taken to ensure all visitors have the best possible experience at Beaulieu.

General Information

- We conduct regular access audit inspections of the site to look for ways we can improve the attraction and our facilities
- **Access to Rides:** We regret that not all of our additional features are fully accessible for customers who use wheelchairs or have limited walking ability. Some rides have strict operating requirements which are set by external safety officers in relation to the feasibility of emergency evacuation procedures.
- **Your Feedback:** Beaulieu welcomes all visitor comments regarding accessibility as we continue to look for ways to improve the experience for future visitors. Dedicated accessibility feedback forms are available from Visitor Reception
- **Assistance Dogs:** Assistance dogs are welcome and can be used to access all areas of the site. Visitors wishing to bring a working dog onto the Monorail should first seek assistance from a member of staff.

We look forward to welcoming you. If you have any queries or require any further assistance, please phone **01590 612345** or email **visit@beaulieu.co.uk**.





Travel Directions

- Beaulieu is situated in Hampshire. It is located within the New Forest National Park between Bournemouth and Southampton.
- **By Road:** Beaulieu is well signposted from all major routes. From the M27 exit at junction 2 and follow the brown and white tourist signs towards Beaulieu. For Sat Nav, please use the postcode SO42 7ZN. We recommend you follow the brown signage when in the vicinity.
- **By Bus:** Wilts & Dorset buses have a limited service between Hythe and Lymington which only runs on Tuesday and Thursday. It drops visitors either at the Museum entrance or in Beaulieu village depending upon the route. Please phone 01202 338420 – the more bus advisors will help plan your route. (0830-1700 Mon - Fri) or visit morebus.co.uk
- **By Rail:** The nearest mainline station is Brockenhurst. Taxi companies operate out of Brockenhurst; the cost of a one-way journey to Beaulieu is approximately £20. Please phone National Rail Enquiries on 08457 48 49 50 (24 hours a day) or visit nationalrail.co.uk to plan your journey to us.

By Ferry: The Hythe Ferry crosses Southampton Water and can be used to connect with bus services from Hythe. Please phone [02380 840722](http://02380840722) or visit hytheferry.co.uk.

Car Parking

- Large signs direct vehicles from the road and into the car park.
- There is a designated accessible car park adjacent to Visitor Reception with 12 parking spaces, from which there is a level paved pathway to the main entrance door
- An additional designated 11 Tarmac accessible spaces can be found nearby at the front of our first visitor car park.
- On events days, the whole of our first car park is reserved for visitors with disabilities.
- Other parking spaces are gravel or grass and are situated amongst parkland.



Visitor Reception

- Our Visitor Reception is accessed via a set of glass doors.
- The area is well lit with overhead and natural lighting and is level on a stone surface throughout. Seating is available on request.
- The admission points are located in front of the main entrance doors. All admission desks are at a lowered level to allow comfortable use for wheelchair users and are fitted with discrete hearing loops
- Large print leaflets can be obtained here on request.
- The Attraction is open 10am to 5pm winter and 10am to 6pm summer – please check website for exact timings

<https://www.beaulieu.co.uk/plan-your-visit/opening-times/>





Wheelchair and Electric Scooter Hire

- Within our Visitor Reception Building, we offer free hire of manual wheelchairs and electric scooters, subject to availability. It is advisable to book these in advance by calling 01590 614646.





Entering the Attraction

- The site is fairly flat with a mixture of pathway surfaces. The surfaces are primarily tarmac and wheelchair friendly, with some areas accessed across short distances of gravel or shingle.
- Access into the attraction is via a tarmac pathway that leads up the spine of the site. From this main pathway visitors can access The National Motor Museum, The Brabazon Restaurant and disabled lavatories

People you might meet at Beaulieu



Beaulieu staff undertake regular training in accessibility awareness and disability issues to ensure the highest standards of customer service are met at all times.

Brabazon Restaurant Lavatories

- The main site lavatories are positioned near the entrance to the Motor Museum building in lower lavatory area underneath the Brabazon restaurant. They are accessed by a small set of stairs or ramp; these do not require a key.
- The restaurant building has two accessible lavatories. These are positioned the main restaurant and in the lower lavatory area. These have, vertical and horizontal grab rails, lever taps and emergency red alarm cords to alert staff if assistance is needed.
- There is a separate baby change facility in the lower lavatory area and a first aid room with a bed.
- Facilities are well lit with overhead LED lighting.
- Hand driers in the main lavatories can be quite loud.





Abbey Lavatories

- Lavatories are available at the Abbey Exhibition
- Here there is an accessible lavatory which includes a wall hung fold down baby change.





Little Beaulieu Lavatories

- There are two large family sized accessible lavatory units within Little Beaulieu. These are well signed posted and designed to meet the needs of most guests
- These include vertical and horizontal grab rails, lever taps and emergency red alarm cords to alert staff if assistance is needed.



Brabazon Restaurant



- There is ramped access into the Brabazon Restaurant which is visible and clearly signposted on the left when leaving Visitor Reception. There are power assisted doors at this entrance operated by a push button.
- The opposite side of the restaurant also has ramped access leading to a set of automatic power assisted doors.
- The restaurant is large with plenty of space to navigate around the tables. All service points are set at a suitable height for most users.
- The floor is smooth and level throughout. The area is well lit with natural and overhead lighting.
- Staff will be happy to assist in carrying goods and trays if asked.



National Motor Museum Building Entrance and Welcome Gallery

- Entrance to the Museum is through two sets of automatic doors.
- In the summer months these doors are usually fixed open.
- There is a flush and firmly fitted entrance mat, but this is made of coir.



National Motor Museum Information Desk

- There is a lowered information desk inside the museum with discrete hearing loops installed.
- Team members offer a range of tours, one being a Touch Tour for customers with visual impairments.
- This tour allows visitors to handle objects and the surfaces of vehicles – ideally these would need to be booked in advance.



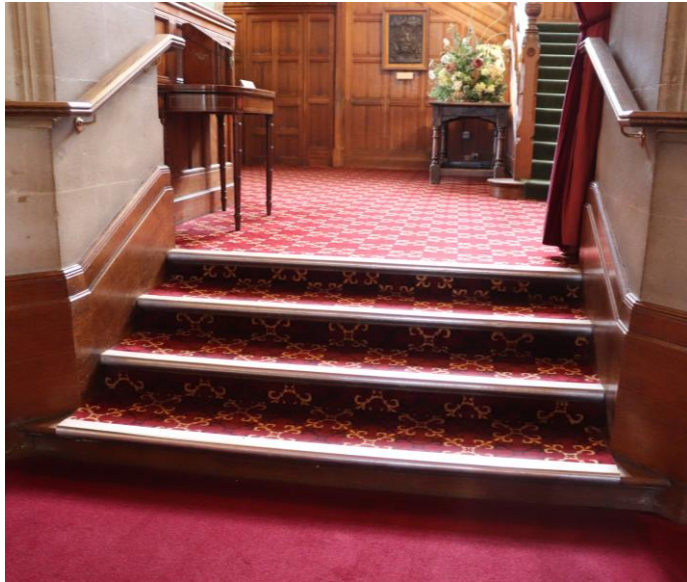
National Motor Museum – Inside

- The museum has three floor levels and a series of exhibition booths with access available to each via ramps and lifts with fully trained staff on hand to assist.
- The National Motor Museum has stone flooring and is generally well lit.
- There can be Tannoy announcements here and lots of background noise from various displays.
- The Land Speed, which is on the lower floor of the Museum area can be dark with loud dramatic music.
- There are interactive exhibitions and touch screens.



Palace House

- The lower level of Palace House is accessible to wheelchair users but due to the historic nature of the property we regret that there is no lift to provide access to the upper floor. The staircase has a handrail on one side. There is a short film about the upstairs rooms which can be requested from the guides. Palace House is carpeted throughout and is generally well lit with natural light and overhead lighting on exhibitions.
- On the lower level of Palace House there are two steps down to the dining area and kitchen shop. Handrails are available but staff will be happy to walk visitors around to the private entrance to allow access without stairs if requested.



Beaulieu Abbey and Exhibition

- The Abbey and the Domus exhibition is a grade one listed building, dating back to 1204. The exhibition documents the life of the Cistercian monks.
- There is an accessible lavatory within the Abbey.
- The paved lower levels of the Abbey, including the Cloister, are accessible for all when following the sign-posted wheelchair route. There are some smaller additional routes that lead around the ruins – the pathways are compact gravel.
- The Domus is above the Abbey Exhibition and can only be accessed by using the stone staircase and handrail. Once upstairs, the room is large and open with displays of impressive Wall Hangings that depict scenes from the history of the Abbey. If customers are unable to access the Domus because of the stairs, there is a book with images taken from the display.



Secret Army Exhibition

- There is a very slight change in level from the paved area outside the exhibition to the building itself, however once inside the exhibition benefits from good lighting and level access throughout.



Riding the Monorail

- The Monorail gives a mile long, bird's eye view of the site and through the museum. The ride is a round trip starting and ending at the same station.
- The ride features a descriptive commentary. The commentary is often live.
- The Monorail station is within the *On Screen Cars* area and is accessible by wooden stairs.
- As the Monorail involves a complex evacuation procedure, the ride is only accessible to visitors who are able to climb the stairs to the platform unaided.
- The carriages of the monorail are quite low and some visitors may need to stoop to get in. The carriages are also compact and may be upsetting for visitors who do not like confined spaces.
- If visitors are unable to access the Monorail, there is a short film of the ride with commentary available via a QR code at the foot of the stations.





Riding the Veteran Bus

- The Veteran Bus circles the site stopping at two bus stops. The bus is accessed via two steps with handrails. There is a top and bottom deck.
- Wheelchairs can be taken on the bus if they fold down.
- The bus can suddenly make loud mechanical noises when braking or changing gear.
- There is a video from the bus available for those who cannot get on board. This is accessed via a QR code at both bus stops.

Little Beaulieu



- Little Beaulieu is a multi-level play facility offering a play experience for suitable for younger visitor of varied ages and abilities.
- The ground levels are generally flat being a mixture of tarmac, rubber crumb and artificial grass with some woodchip.
- The main structures, which are representative of buildings at the Beaulieu attraction, are accessed by ramps.
- Little Beaulieu includes sensory play equipment such as musical instruments, tactile games and a sand pit are included.
- There are opportunities for children to play with natural materials in the form of planted areas such as trees and bushes and the availability of natural materials like leaves and twigs, logs and boulders.
- The space offers play opportunities for the whole family of all ages, which includes individual and cooperative activities.
- There are private spaces to play and hide for quiet play within Little Beaulieu. These include hidey holes, tunnels, small nooks and cosy spaces.



Gift Shops

- There are two gift shops at Beaulieu. The main gift shop in our Visitor Reception and a smaller gift shop in Palace House.
- The shops are well laid out with level access and passing space between display units.
- Pay desks have low sections and discrete hearing loops.
- There may be background noise in the shop when it is busy.